

ANNEX 4: WARNING SYSTEMS

This Annex outlines how warnings are received and passed on to provide timely information to those organisations that may need to respond to any incident. The *National Civil Defence Plan, Part 3 National Warning* provides further detail.

4.1 Civil Defence Warnings

The Director of Civil Defence and Emergency Management, under the *National Civil Defence Plan, Part 3 - Civil Defence Warning System*, is responsible for the production and distribution of the National Warning System. Any such warnings will usually be issued by the Ministry direct to the Hawke's Bay Regional Council's Duty Manager who then has responsibility to distribute the warning to the local authorities and emergency services as appropriate. It is the Territorial Local Authorities responsibility to warn the public and other interested parties.

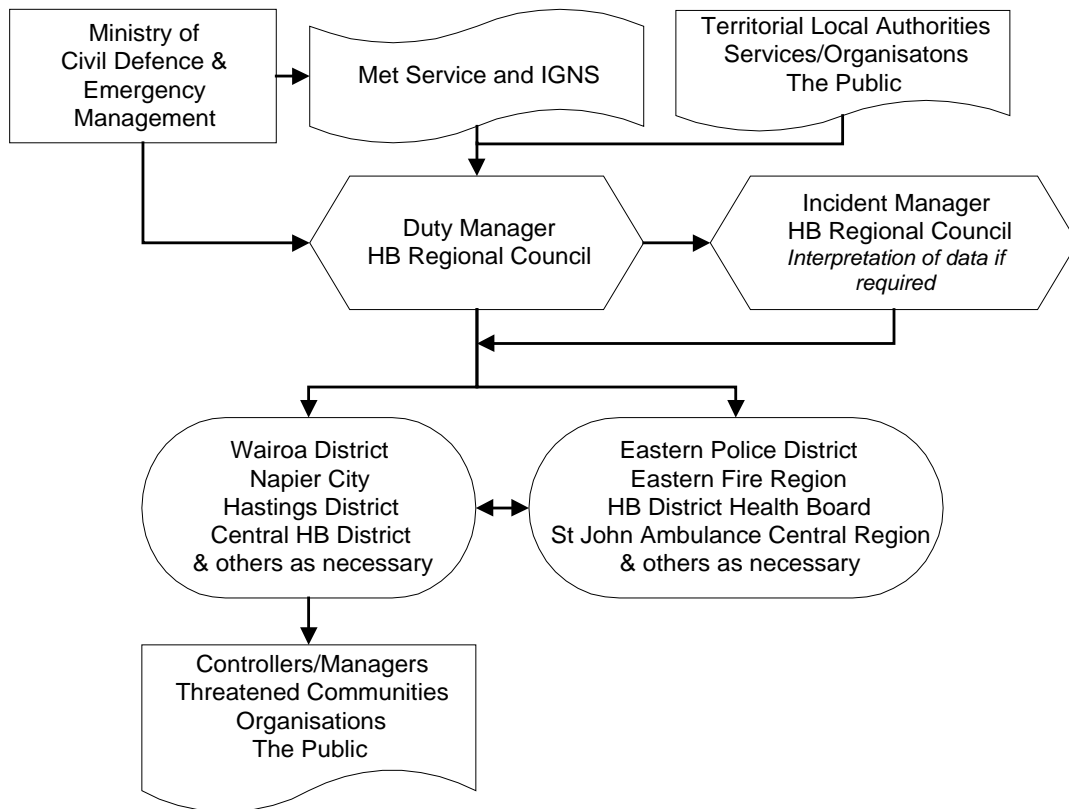
Warnings to the public become the legal responsibility of the Group Controller once a declaration of a state of local emergency has been made. The means by which warnings may be issued will vary with the type and scale of the emergency, but may include:

- Sounding of sirens (vehicle and/or Fire Station alarms).
- Personal contact (door to door canvassing and/or pamphlet drops).
- Broadcasts made from vehicle public announcement (PA) systems.
- Public announcements made on broadcast radio and television networks. All public announcements regarding a civil defence emergency must commence and conclude with the official warning signal, the 'sting', for alerting people that important public announcement is about to be made.

In some circumstances, Territorial Local Authorities, other organisations or the public are the first to be aware of a major incident or emergency. If so, they should contact Hawke's Bay Regional Council's Duty Manager who will pass the information on to the appropriate authorities in Hawke's Bay. Thereafter, it becomes the Territorial Local Authorities responsibility to warn the general public and other interested parties.

The way in which warnings are received and distributed is shown in the following diagram.

Figure 3: Flow Chart for Warnings



4.2 Weather warnings

MetService is responsible for producing and distributing weather warnings, these warnings are for strong winds, storm swells, heavy rainfall, and snowfalls. The warnings will normally be issued by MetService direct to Hawke’s Bay Regional Council’s Duty Manager.

Hawke’s Bay Regional Council’s Duty Manager is responsible for passing on the warnings to the Territorial Local Authorities in Hawke’s Bay. If appropriate Hawke’s Bay Regional Council’s Incident Manager may provide additional interpretation of the data (particularly related to rainfall and river flows), to the Territorial Local Authorities. It is the Territorial Local Authorities responsibility to warn the public and other interested parties.

Hawke’s Bay Regional Council’s Engineering & Works Department also maintain a system to alert people who may be affected as the river systems rise.

4.3 Volcanic Warnings

The Institute of Geological and Nuclear Sciences (GNS) has the general responsibility for monitoring volcanic activity and will issue Watch and Warning Bulletins as necessary. There is an expectation that at least 24 hours warning will be given for possible eruptions. These Watch and Warning Bulletins will be directed to Hawke’s Bay Regional Council’s Duty Manager who is responsible for passing on the Watch and/or Warning Bulletins on to

the Territorial Local Authorities. It is the Territorial Local Authorities responsibility to warn the public and other interested parties.

Seismological staff of GNS, maintain seismic recording devices in several locations throughout Hawke's Bay. GNS staff will pass back details on any reported events via the Ministry of Civil Defence and Emergency Management.

4.4 Tsunami Warnings

4.4.1 Tsunami of Distant Origin (Teletsunami)

The Pacific Tsunami Warning Centre in Hawaii provides warnings for teletsunamis to most countries in the Pacific. If a distant sourced Tsunami were likely to affect New Zealand, the Pacific Tsunami Warning Centre would advise the Ministry of Civil Defence & Emergency Management. The Ministry are then responsible for advising those areas likely to be affected, such warning would go to Hawke's Bay Regional Council's Duty Manager, who would then forward the information on. Communities at risk will be warned by the fastest means possible. No formal evacuations will take place without a declaration of a state of local emergency. If the decision is made to declare, then the Group Controller will authorise the warnings.

4.4.2 Tsunami of Local Origin

There is no warning system for a Tsunami of local origin, except that an earthquake may trigger it. Where practical warnings will be issued once the CDEM Group becomes aware that an event has impacted on the coast. To partially counter this lack of warning, the public needs to take responsibility for their own safety. For people who live in close proximity to the sea (within 750 metres of the seashore, and up to 35 metres above sea level), schools (and the public) on the coast are encouraged to evacuate inland as part of their earthquake drill. Any locally generated Tsunami that impacts into communities or camping areas (during the summer) may require a declaration, so any post event warnings or information will come from the Group Controller.

4.5 Earthquakes

No warnings are possible for earthquakes. Where practical all earthquakes should be reported to the Ministry of Civil Defence & Emergency Management.

The Institute of Geological and Nuclear Sciences (GNS) provide information on the size and location of all earthquakes to the Ministry of Civil Defence & Emergency Management and to Hawke's Bay Regional Council. GNS can also provide information on likely aftershocks following a major earthquake.

4.5.1 Testing of Warning Systems

The Ministry of Civil Defence and Emergency Management is responsible for testing the effectiveness of the National Warning System and does so at irregular intervals throughout the year.

The CDEM Group is responsible for testing the effectiveness of its own local warning systems.

Locally there are enough real incidents such as normally rainfall warnings, to test the system each year to ensure that it works.

4.5.2 Notification of Emergency

In the event of a declaration of a state of local emergency occurring, information about the nature and extent of the event must be passed on as soon as possible to the Group Controller and to the Ministry of Civil Defence and Emergency Management. Key response agencies, technical services advisors and adjacent CDEM Group's are also to be informed of emergency events. This can be done by including them on the distribution of the regular situation reports that are provided by the Group Controller.

4.5.3 Procedures For Activating New Zealand Fire Service Sirens For Civil Defence Declarations

Where a local authority does not have its own sirens, NZ Fire Service and Rural Fire Force Station sirens may be used. These are normally activated through the New Zealand Fire Service Communications Centre in Wellington.

The procedures for activating these sirens are detailed in the Regional Council's Emergency Procedures Manual.